

Screenguard™ Semi-Automatic "T" Screen Filters

Installation, Operation & Maintenance Instructions



Netafim 2" and 3" Semi-Automatic plastic "T" screen filters are design to operate as both primary and secondary filter unit's dependent on the applications. The filters are available with multiple screen area and connection type to address any application needs. The filter body is made from durable plastic material for extra strength and longevity.



Installation

- » Use Teflon tape on filter body inlet & outlet threads – do not use pipe dope
- » Ensure correct water flow direction (as per arrow marking on filter)
- » Flanged configuration includes anti rotation mechanism to allow installing at any required angle. When using flange - align filter position (angle) before tightening the bolts
- » **DO NOT ROTATE FILTER AFTER BOLTS ARE IN PLACE**
- » Assemble drain valve on the filter cover (O-ring included)
- » Place rotation handle on the shaft, align holes and insert the plastic pin
- » Ensure adequate space for operation and maintenance of the filter (See dimensional drawings)

Routine Inspection

- » The semi-automatic filter includes automatic clogging indicator (F)
- » When pressure difference between filter inlet and outlet reaches 0.5 Bar, the red indicator (R) pops out and becomes visible
- » This is an indication that the filter should be cleaned
- » After cleaning, pressure difference returns to normal value, and the red indicator (R) retreats back automatically

Semi-Automatic Cleaning Operation

- » Open drain valve (D)
- » Rotate handle (H) slowly all the way out and then back in
- » **NOTE – while working with low quality water or low-pressure application, it is advised to perform the cleaning operation while the downstream valve is closed**
- » Close drain valve (D)

Dismantling the Filter

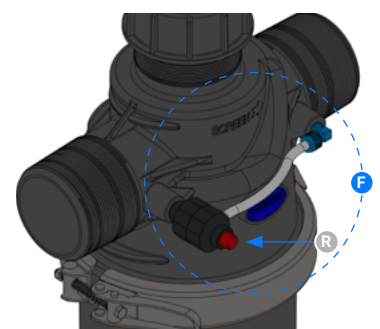
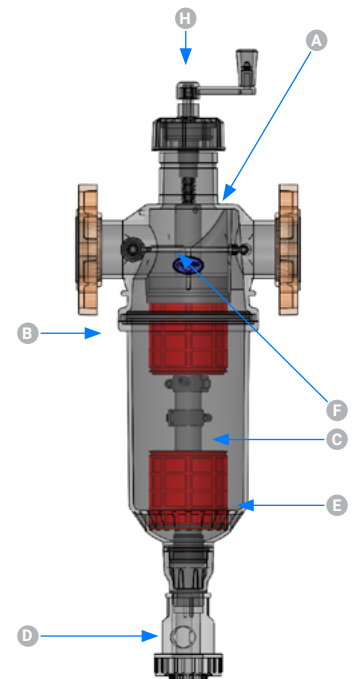
- » Turn off the water to the filter
- » Open the drain valve (D) to release any remaining pressure
- » Open filter body clamp (B) and remove filter cover (C) from filter body (A)
- » Pull out screen elements (E) from filter body (A)

Cleaning and Maintenance

- » Use pressure hose to thoroughly clean screen elements
- » If needed use soft nylon brush to help with cleaning to screen
- » Do not use any abrasive tools
- » Inspect nozzle cleaning assembly and make sure all nozzles are intact

Assembly

- » Ensure the screen element (E) is clean and that both O-rings are in place
- » Rotate the suction mechanism clockwise all the way in
- » Push screen element (E) into filter body (A)
- » Place filter cover (C), make sure the suction pipe is inside the lower bushing
- » Push the filter cover (C) to place
- » Lock with filter body clamp (B) using the clamp lever
- » Close drain valve (D)
- » Open the water gradually, to avoid water hammers



WARNINGS

Do not open the filter under pressure

During winter season, drain the filter to avoid freezing damage

Do not backflow water through the filter

Technical Details

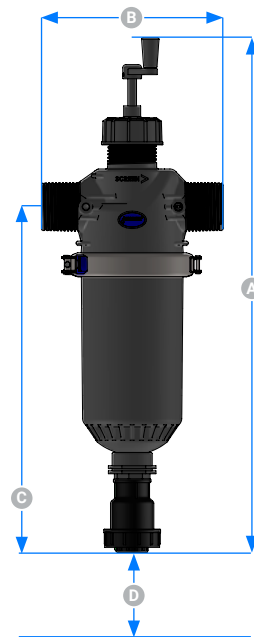
	2"		3"	
	Regular	Jumbo	Regular	Jumbo
Max Working Pressure	8 bar/115 psi			
Max Recommended Flow*	20 m3/h	25 m3/h	25 m3/h	30 m3/h
Filtration Surface Area	1,210 cm2	1,610 cm2	1,210 cm2	1,610 cm2
Connection Types	BSP/NPT		BSP/NPT/UNF/VIC	
Drain Valve Diameter	1.5"			

	A (mm)	B (mm)		C (mm)	D** (mm)	Weight (Kg)	
		Threads /Vic	Unf			Threads /Vic	Unf
2" Regular	980	335	-	670	420	6.5	-
2" Jumbo	1,100			790	540	7.5	-
3" Regular	980	340	-	670	420	6.5	7.5
3" Jumbo	1,100			790	540	7.5	8.5

Mesh	Micron	Color
150	100	Black
120	130	Red
80	200	Yellow

* Maximum flow rate depends on water quality | Flange thickness - 35mm

** Distance required to open the filter

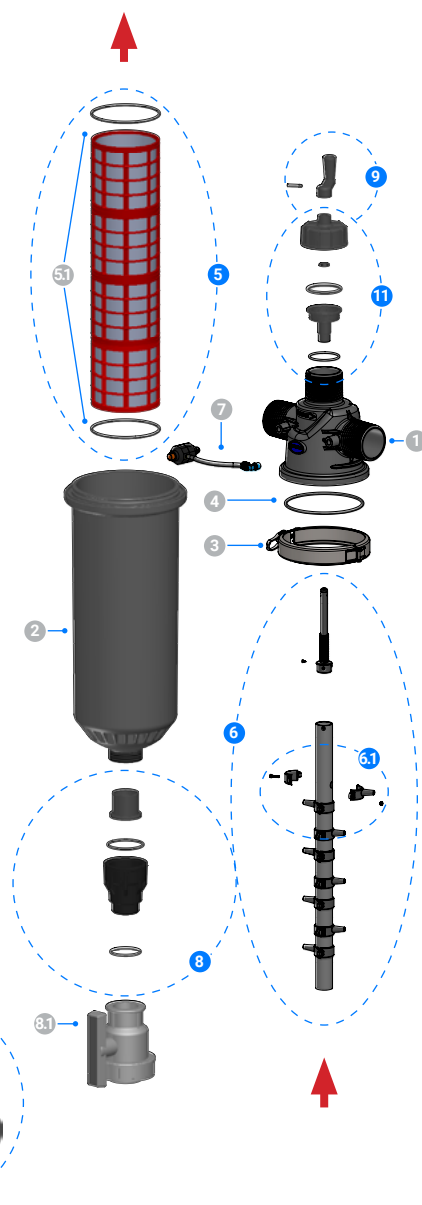


Part List

Catalog numbers start with: 71975 - (any of below 6 digits)

* Catalog numbers start with: 77450 - (any of below 6 digits)

#	Description	2" Regular	2" Jumbo	3" Regular	3" Jumbo
1	Filter Body Bspt	000100	000100	000114	000114
	Filter Body Npt	000120	000120	000121	000121
	Filter Body Flanged/Bspt	-	-	000250	000250
	Filter Body Vic/Bspt	-	-	000251	000251
2	Filter Cover	000401	000402	000401	000402
3	Filter Clamp	000480	000480	000480	000480
4	Filter Cover O-Ring	000260	000260	000260	000260
4+5.1	Filter Main O-Ring Kit (parts 4, 5.1)	000463	000463	000463	000463
5	Fine Screen 100 mic	000383	000386	000383	000386
	Fine Screen 130 mic	000384	000387	000384	000387
	Fine Screen 200 mic	000385	000388	000385	000388
6	Collector Pipe Kit For S.auto Filter	000490	000491	000490	000491
6.1	Nozzle Kit For S.auto Filter	000450	000450	000450	000450
7	Clogging Indicator	000560	000560	000560	000560
8	Filter Drain Kit	000392	000392	000392	000392
8.1	Filter Drain Valve	000103 *	000103 *	000103 *	000103 *
9	Handle Kit For S.auto Filter	000462	000462	000462	000462
10	3" Universal Flange Kit	-	-	000440	000440
11	Filter Handle Accessories Kit Bspt	000460	000460	000460	000460
	Filter Handle Accessories Kit Npt	000461	000461	000461	000461



Typical Installation

