

QUICK GUIDE

AlphaDisc™ CLD: Cloud-Based Filtration Controller

INTRODUCTION

About the Quick Guide

This Quick Guide provides basic installation and operation instructions for your AlphaDisc™ CLD controller, with focus on the AlphaDisc™ CLD mobile applications.

For a complete guide for using your AlphaDisc™ CLD controller please refer to the AlphaDisc™ CLD Manual or scan the QR code.



About the AlphaDisc™ CLD Controller

AlphaDisc™ CLD by Netafim, is our most advanced smart controller for a wide range of filtration solutions.

By using the AlphaDisc™ CLD, you will be able to receive real time data regarding your filter performance, relevant alerts, technical and marketing updates. AlphaDisc™ CLD allows you to modify various parameters for your filtration system remotely.

Supporting both Cloud and Bluetooth® wireless technology, AlphaDisc™ CLD allows you to connect to your filter from any mobile device or desktop, regardless of your location (while on the Cloud).

The AlphaDisc™ CLD Controller Components

Take a few moments to familiarize yourself with the AlphaDisc™ CLD Controller components:



1. Protection cover
2. LCD display
3. Left control button
4. Right control button

5. Water connection for internal DP sensor (inlet and outlet)
6. Power cable gland
7. RJ-45 connection (optional)

8. External antenna SMA connection

AlphaDisc™ CLD Controller Buttons

There are two main buttons on the AlphaDisc™ CLD controller control panel.

Following is the functionality description of the buttons:

	LEFT BUTTON	RIGHT BUTTON
SHORT PUSH	TURN ON DISPLAY BACKLIGHT	START MANUAL FLUSH
LONG PUSH	ENTER COMMUNICATION MODE	FORCE FULL CLOUD SYNCHRONIZATION

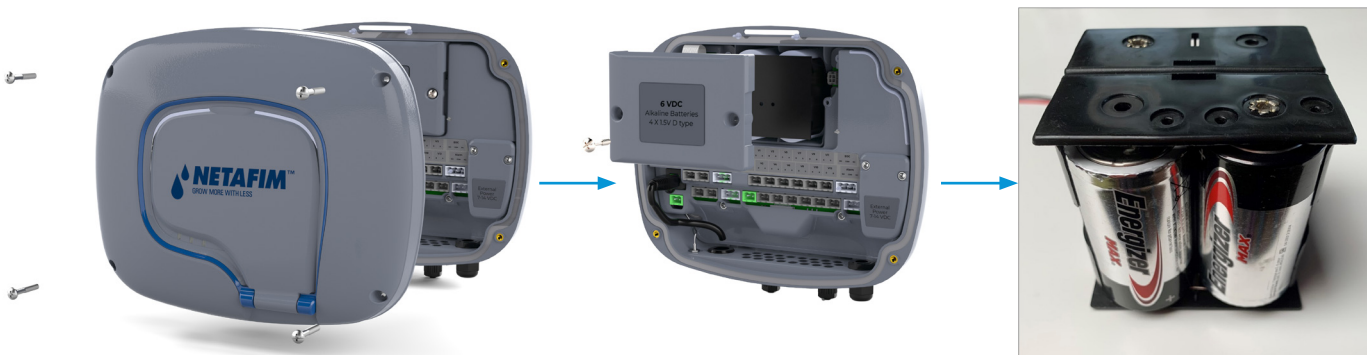
Batteries Installation/Replacement

The AlphaDisc™ CLD controller is supplied with 4 x 1.5V Type D batteries supplied loose.

The estimated batteries' lifetime is one year or about 80K flushes (whichever comes first).

To install/replace the batteries:

1. Remove the top cover by loosening the four screws.
2. Remove the two screws that secure the battery cover. This will allow access to the battery assembly.
3. Remove the battery assembly from the device and replace 4 x 1.5V Type D batteries.
4. Reinstall the battery assembly.
5. Close battery cover and tighten the screws.
6. Reassemble the top cover and tighten the screws.



AlphaDisc™ CLD Desktop, AlphaDisc™ CLD Mobile, and AlphaDisc™ BLE Mobile Applications

The AlphaDisc™ CLD controller can be controlled by three applications as follows:

1. **AlphaDisc™ CLD Desktop application** connects to the controller via the cloud. It allows you to operate your controller by remote access.

To access the **AlphaDisc™ CLD Desktop application** go to the Netafim.com website.

2. **AlphaDisc™ CLD Mobile application** connects to the controller via the cloud. It allows you to operate your controller by remote access.

3. **AlphaDisc™ BLE Mobile application** connects to the controller via Bluetooth® wireless technology.

The mobile device should be within a range of 10-15 meters from the controller. This application does not require or support cloud services.

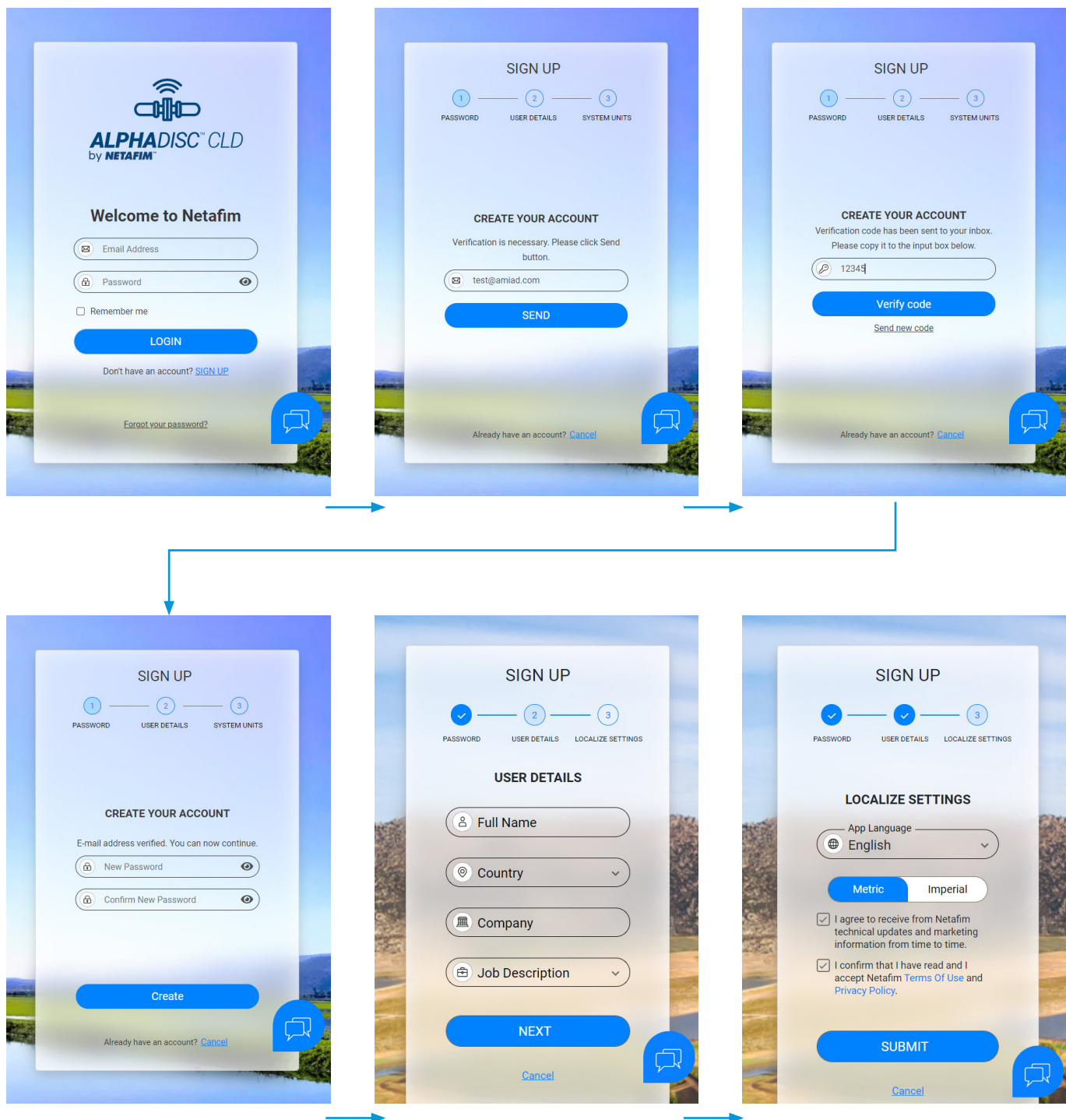
The free **AlphaDisc™ CLD** and **AlphaDisc™ BLE** mobile applications by Netafim are available for download on Google Play (Android version 5 and up) or the App Store (iOS version 9 and up).

APPLICATIONS PREPARATION

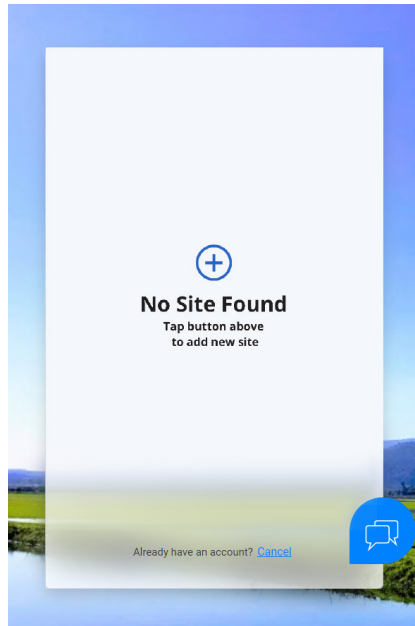
AlphaDisc™ CLD Desktop Application Sign Up

To create a new AlphaDisc™ CLD user account:

1. Click "SIGN UP".
2. Enter your Email address and click "SEND".
3. A verification code will be sent to your email. Log into your email account, open the mail and copy your verification code. Paste the verification code and click "Verify code".
4. Create your new password in the "New Password" field and reenter the new password in the "Confirm New Password" field. Remember your password! Click "Create".
5. Enter your Full Name, Country, Company and Job Description. Click "Next".
6. Select your application language and units (METRIC or IMPERIAL). Click "SUBMIT".



7. Your AlphaDisc™ CLD user account was created!

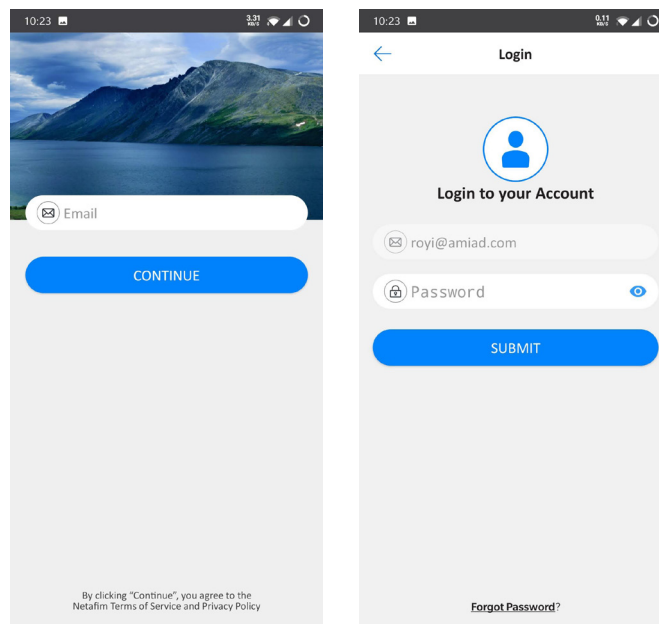


AlphaDisc™ CLD Mobile Application Log In

Download and install the **AlphaDisc™ CLD Mobile application** on your mobile device.

Log in using Email and password created earlier (see 4.1.1).

1. Enter your Email (used for signing up in AlphaDisc™ CLD Desktop application). Click "CONTINUE".
2. Enter your password (created during sign up in AlphaDisc™ CLD Desktop application). Click "SUBMIT".



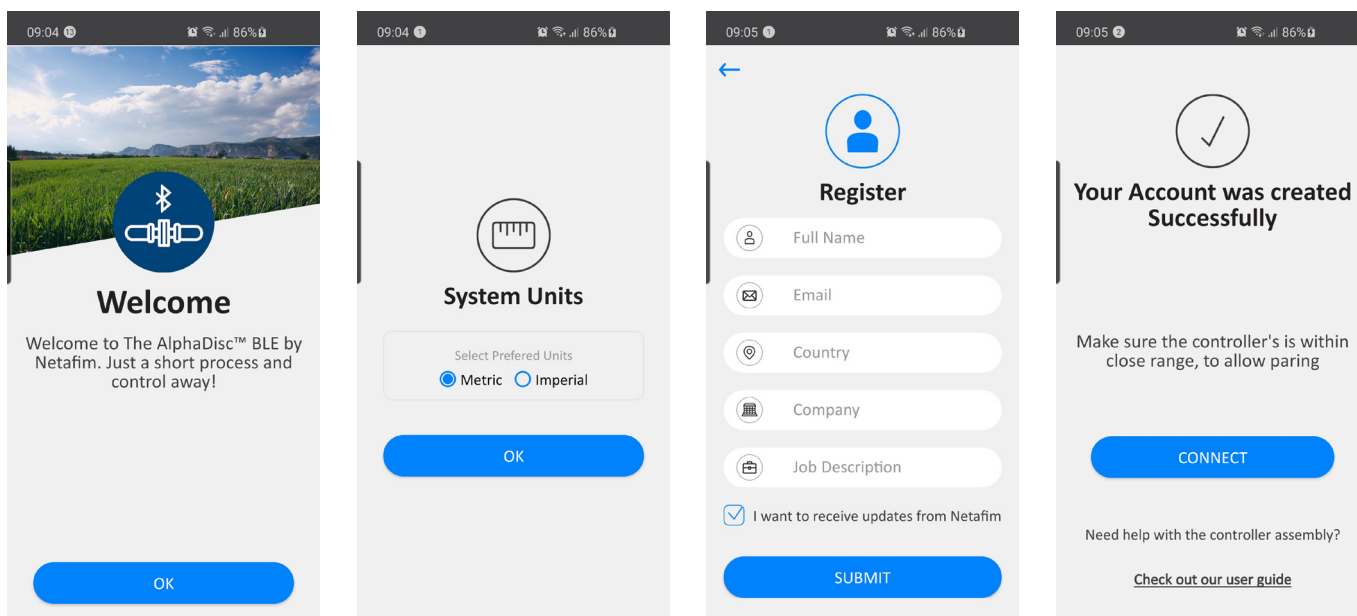
AlphaDisc™ BLE Mobile Application Registration

Download and install the **AlphaDisc™ BLE Mobile application** on your mobile device. To register your account in the **AlphaDisc™ BLE** application:

1. Activate your mobile device's Bluetooth® discovery mode and start the AlphaDisc™ BLE application.
2. Click "OK" to start setting up your account.
3. Select your preferred system units (Metric or Imperial and click "OK".
4. Enter your Full Name, Email, Country, Company, and Job Description. Click "SUBMIT".

To skip this step, click "SKIP" in the upper right corner (completing these steps is recommended for better support).

5. At this stage, your account was successfully created and is ready use.



Adding AlphaDisc™ CLD Controller to a User Account

Adding an AlphaDisc™ CLD controller to your user account can be done using the **AlphaDisc™ CLD Desktop application** or the **AlphaDisc™ CLD Mobile application**. When the controller is added to your account it will be reflected on both applications.

The AlphaDisc™ CLD controller can be added only to a single account – the owner account.

The owner can share the AlphaDisc™ CLD controller with other users (see 5.2 AlphaDisc™ CLD Controller Sharing).

To add your **AlphaDisc™ CLD** controller to your account, you need to set the AlphaDisc™ CLD controller in communication mode and get the specific PIN code displayed, by following these instructions:

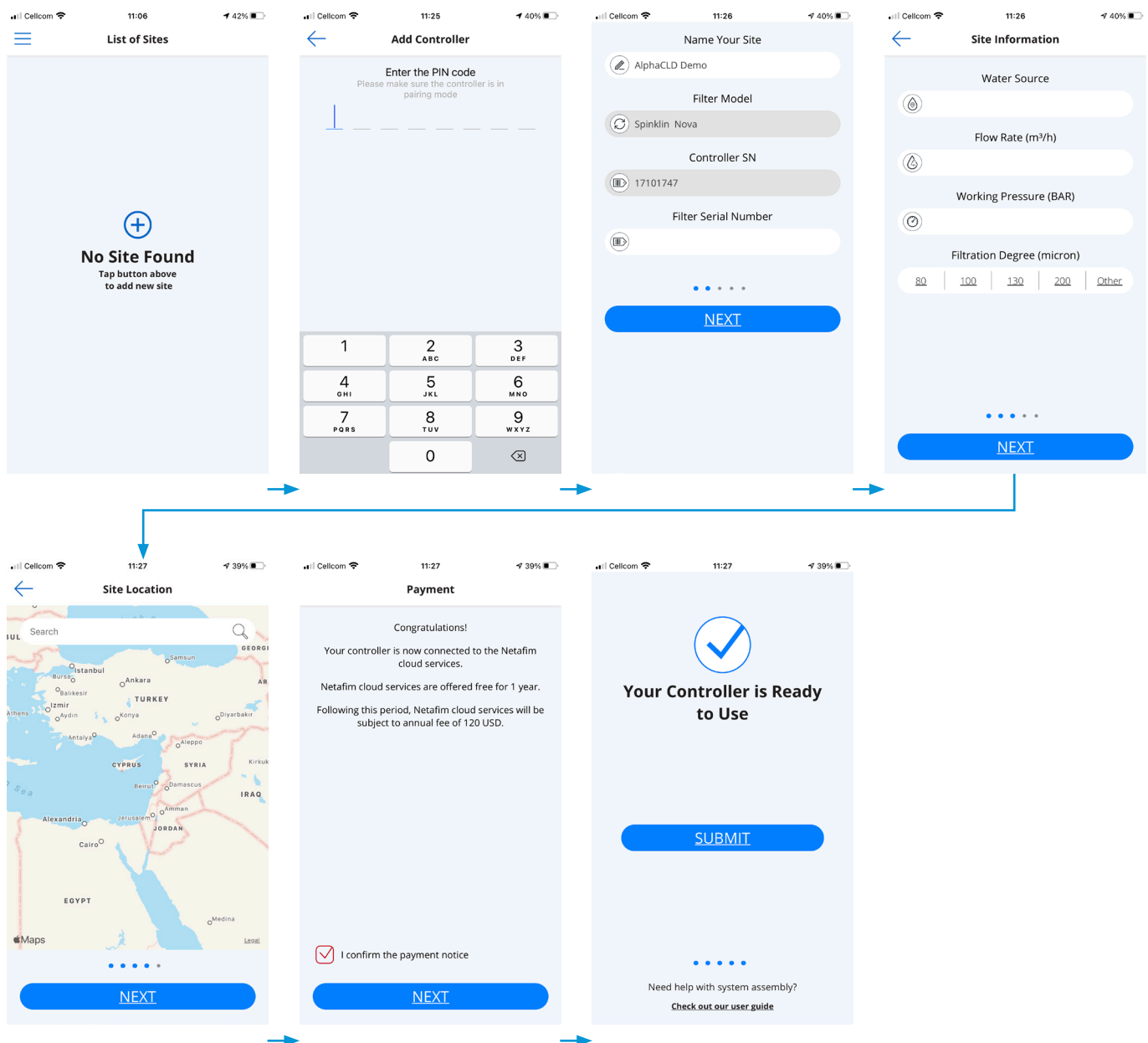
1. Open the **AlphaDisc™ CLD** controller display protection cover.
2. If needed, Press the Left Button to enable LED backlight.
3. Press and hold the Left Button on the **AlphaDisc™ CLD** controller until the 8-digit PIN code appears on the screen.



Adding AlphaDisc™ CLD Controller using the AlphaDisc™ CLD Mobile Application

To add AlphaDisc™ CLD controller to a user account using **AlphaDisc™ CLD Mobile Application**:

1. Open the **AlphaDisc™ CLD Mobile Application**. Sign in with your email and password.
2. Click the "+" in the "List of Sites" window.
3. Make sure the controller is turned on and in communication mode. Enter the 8-digit PIN code obtained from the controller. Click "NEXT".
4. In "Site ID" screen enter your site name in the "Name Your Site" field, select filter model from the list, enter filter serial number in "Filter Serial Number" field, add site picture by clicking the Site image icon. Click "NEXT".
5. In "Site Information" screen select water source from the list, enter flow rate in "Flow Rate (m³/h)" field, enter working pressure in "Working Pressure (BAR)" field, select filtration degree from the list. Click "NEXT".
6. In "Site Location" screen set the location of the site on the map. Click "NEXT".
7. In "Payment" window you should confirm the payment notice. At this stage, your controller is connected to your account and ready for use! Click "Next".
8. At this stage your controller was connected to your user account and ready for use! Click "SUBMIT".

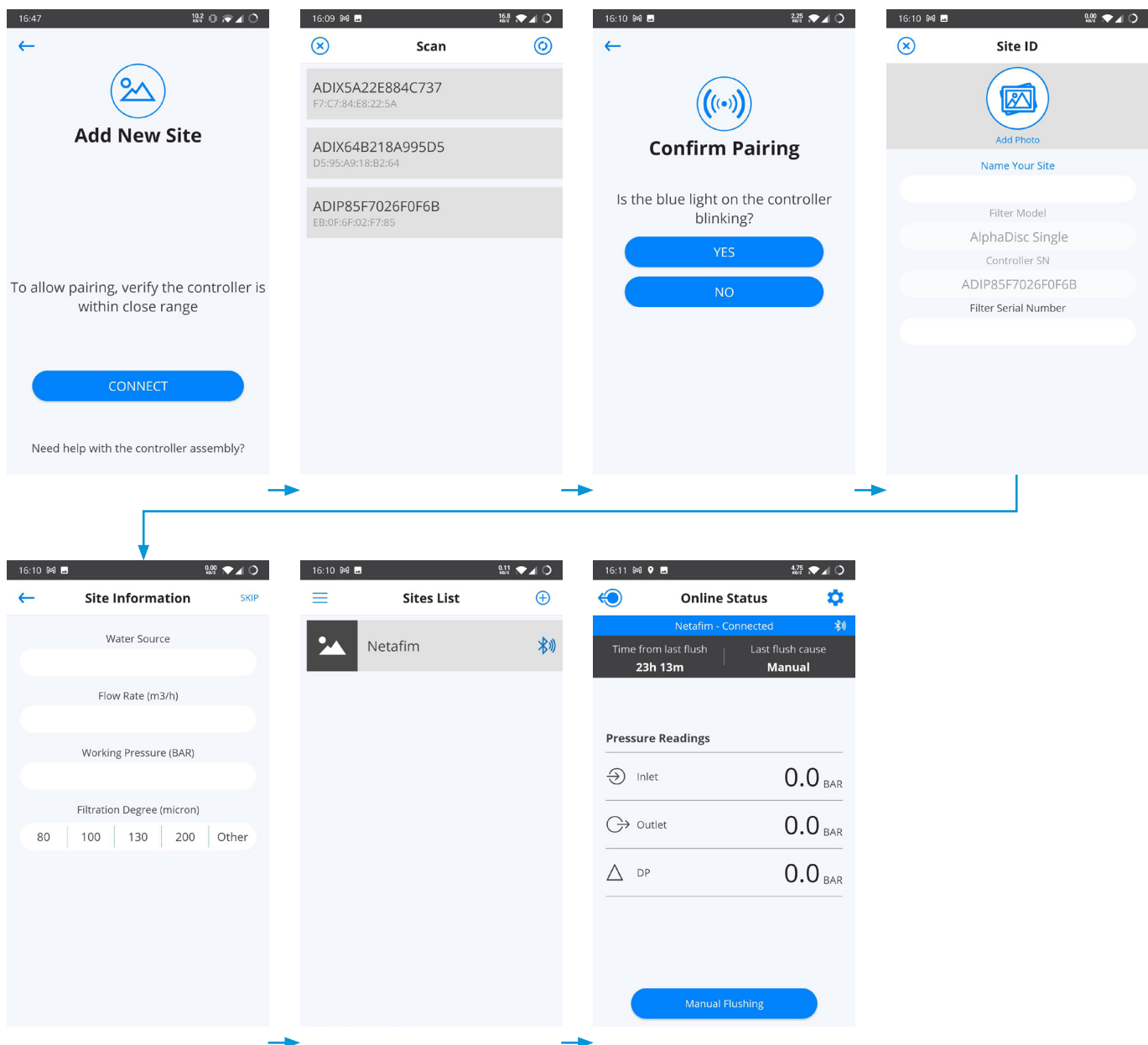


Pairing AlphaDisc™ CLD Controller using the AlphaDisc™ BLE Mobile Application

Notice: Pairing the AlphaDisc™ CLD controller with the Bluetooth® application will utilize part of the full list of features available in the cloud applications. Netafim recommends pairing the AlphaDisc™ CLD controller with the dedicated AlphaDisc™ CLD applications (Mobile and Desktop).

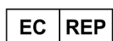
To pair the controller with the **AlphaDisc™ BLE Mobile Application**:

1. Verify your mobile device's Bluetooth® discovery mode is activated. To start pairing with the AlphaDisc™ CLD controller, click "+" in the window. The application scans for controllers within the Bluetooth® range (10-15 meters).
2. Select your controller from the controllers list in range. The application will start pairing.
3. Verify that the blue/green LED on your controller is blinking. Click "YES" to confirm.
4. At the end of the pairing process, complete the Site ID form: name your site, enter filter model and controller serial number if needed. You may add a site photo by clicking on "Add Photo". Click "➔".
5. Enter the Site Information details (optional), Click "SUBMIT" to add your new filter to the Sites List.
6. To view data from your controller, select the active controller from the "Sites List", marked by the active Bluetooth® icon.





Manufacturer
Amiad Water Systems Ltd.
D.N. Galil Elyon 1, 1233500, Israel.
Tel: +972 4690 9500 | Fax: +972 48141159 | Email: info@Netafim.com



European Authorised Representative for CE
Obelis s.a. Bd Général Wahis 53, 1030 Brussels, Belgium.
Tel: +(32) 2732 5954 | Fax: +(32) 27326003 | Email: mail@obelis.net

EU Declaration of Conformity <https://www.amiad.com/certificatesDownload.asp>